



US Army Corps  
of Engineers®  
BUILDING STRONG®

# Hurricane Ida Adv. 6

For Planning Purposes Only!

WASHINGTON, DC  
18:40:32  
27 Aug 2021

CHICAGO  
17:40:32  
27 Aug 2021

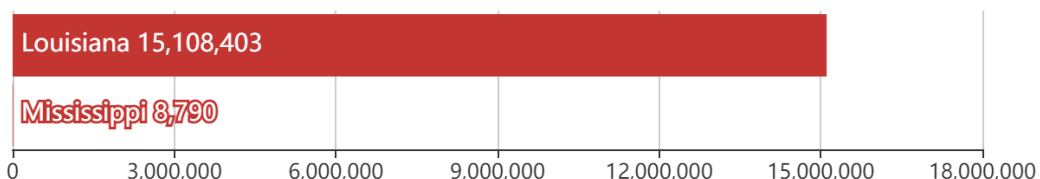
LOS ANGELES  
15:40:32  
27 Aug 2021

<https://go.usa.gov/xFJcR>

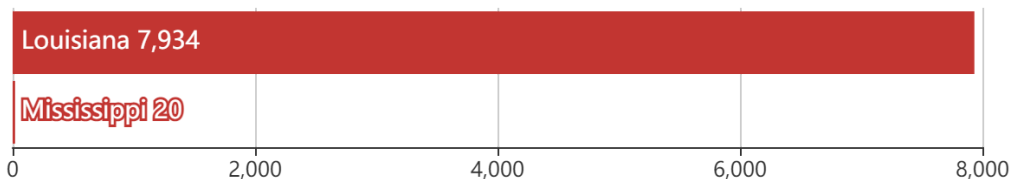
Updated as of 27 Aug 2021 (5:40 PM Central Daylight Time)

## Debris

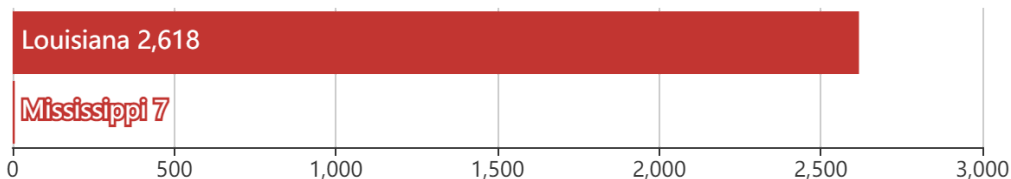
15.1M  
cu. yd.



Est. Temp.  
Roofing  
8K  
units

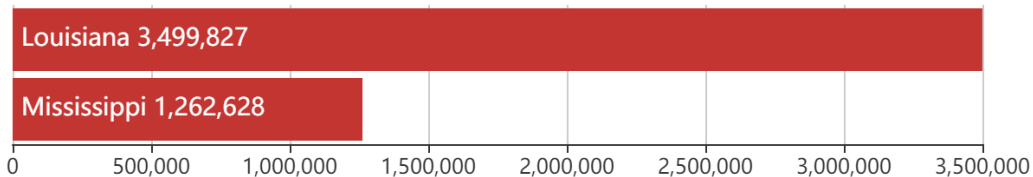


Act. Temp.  
Roofing  
2.6K  
units



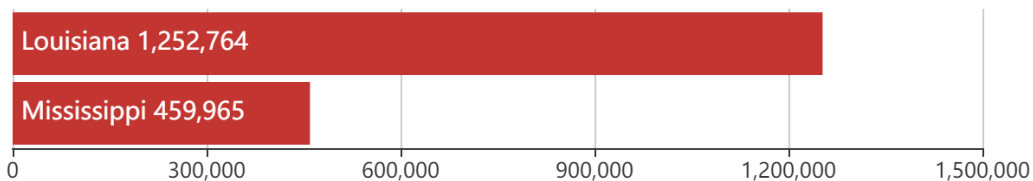
## Population

4.8M  
people



## Households

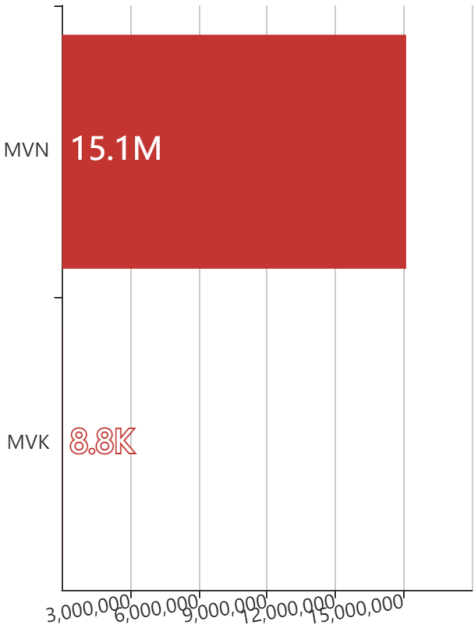
1.7M  
households



Mission Model Summary

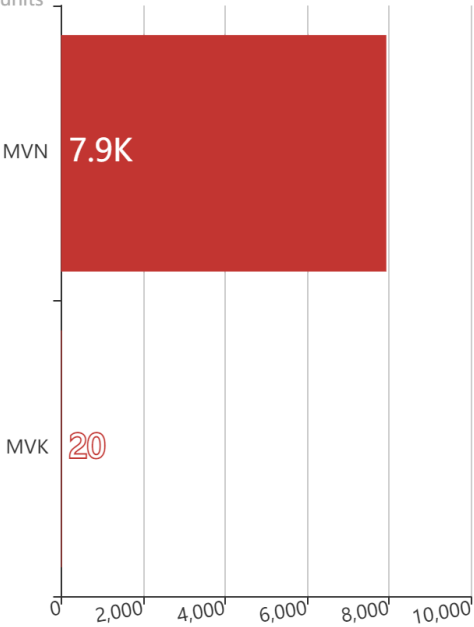
Debris By USACE District

cu. yd.

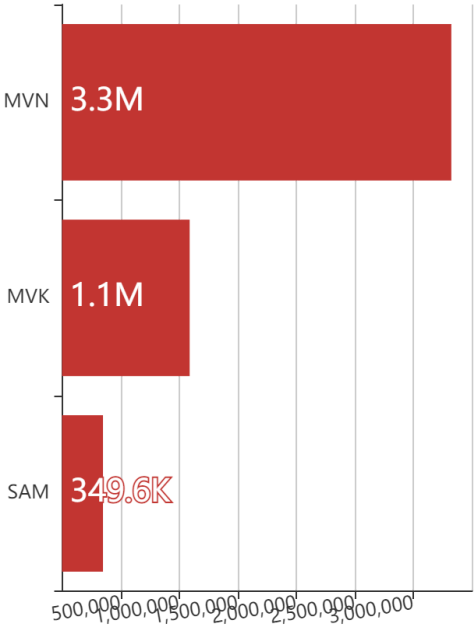


Est. Temp. Roofing By USACE District

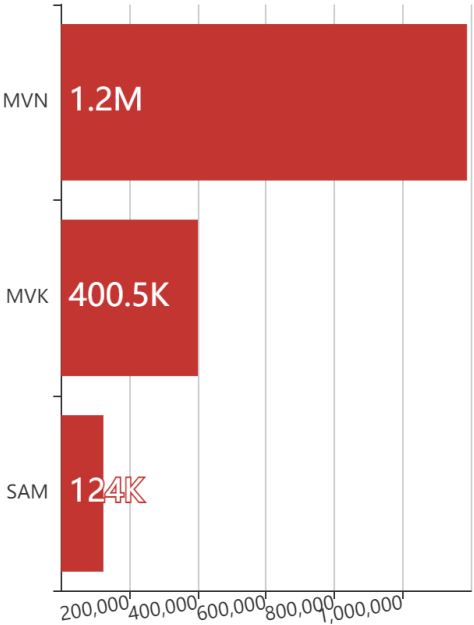
units



Population By USACE District



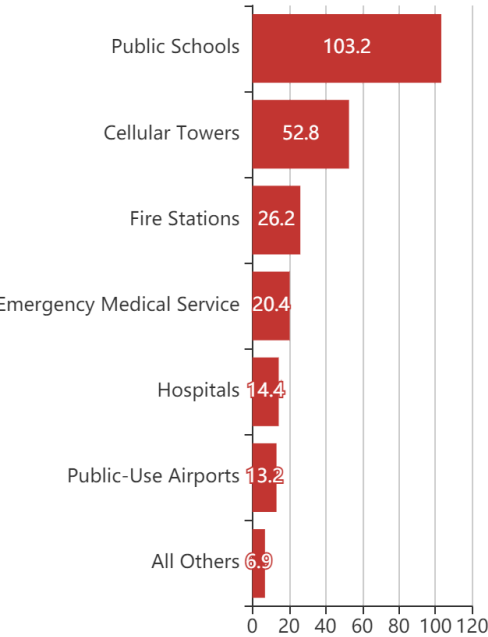
Households By USACE District



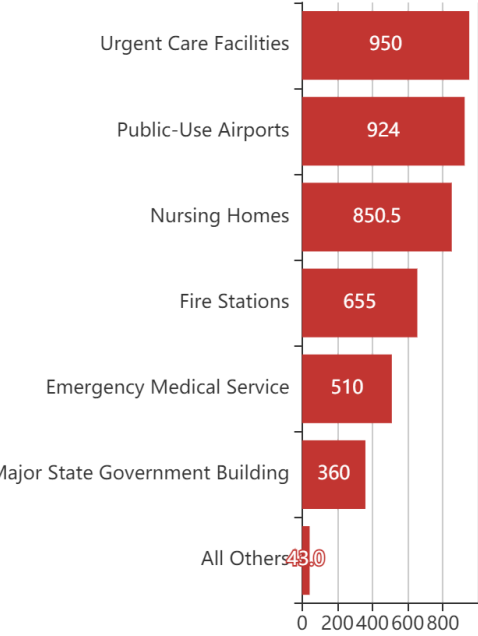
Critical Infrastructure Summary



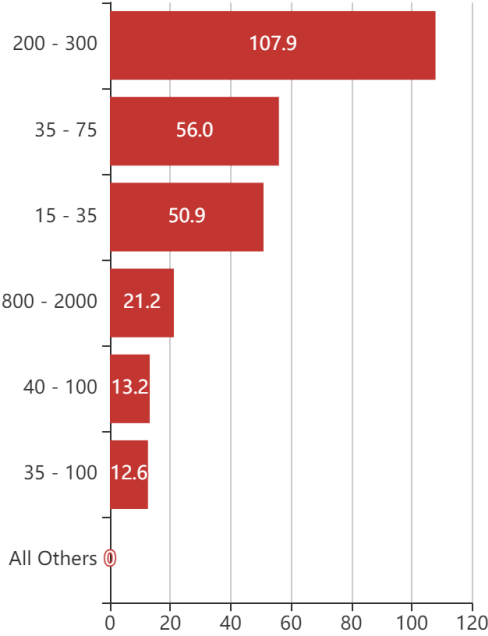
**Generators**  
By Generator Count



**Generators**  
By Power Requirement

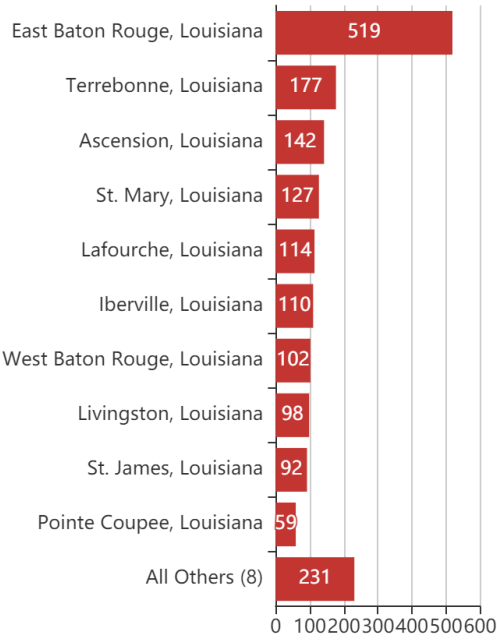


**Generators**  
By Range



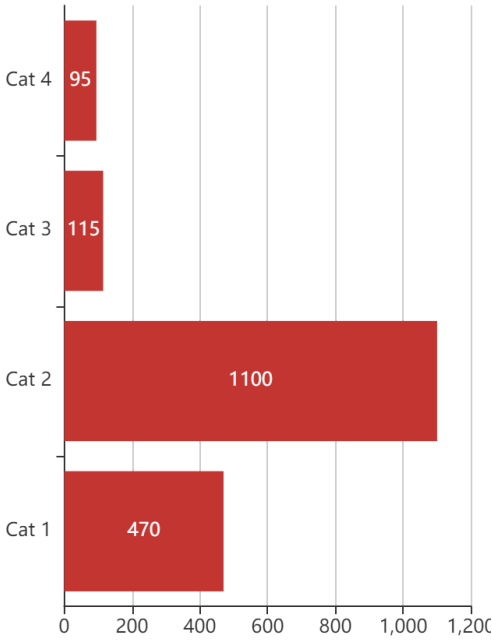
Structures

By County



Structures

By Intensity





# Key Messages for Hurricane Ida

## Advisory 6: 5:00 PM EDT Fri Aug 27, 2021

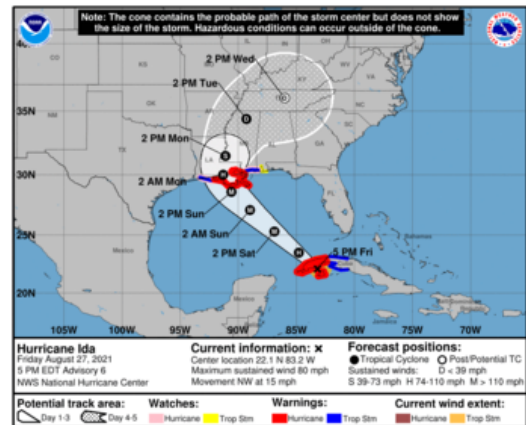


1. Life-threatening storm surge and hurricane conditions are expected to continue through tonight in portions of western Cuba, including the Isle of Youth, where a Hurricane Warning is in effect. Life-threatening heavy rains, flash flooding and mudslides are expected across Jamaica, the Cayman Islands, and western Cuba, including the Isle of Youth.

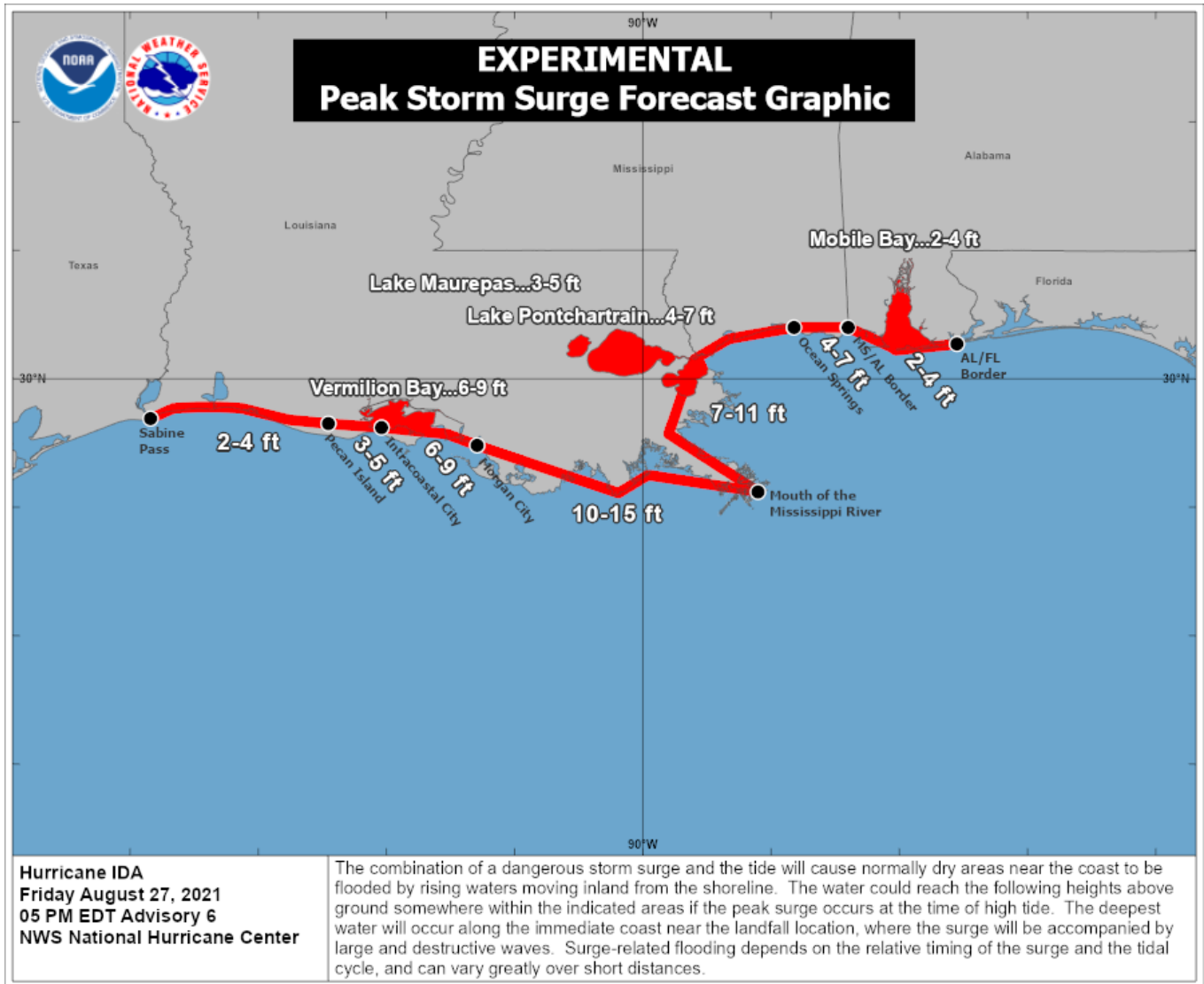
2. There is a danger of life-threatening storm surge inundation Sunday along the coasts of Louisiana and Mississippi within the Storm Surge Warning area. Extremely life-threatening inundation of 10 to 15 feet above ground level is possible within the area from Morgan City, Louisiana, to the Mouth of the Mississippi River. Interests throughout the warning area should follow any advice given by local officials.

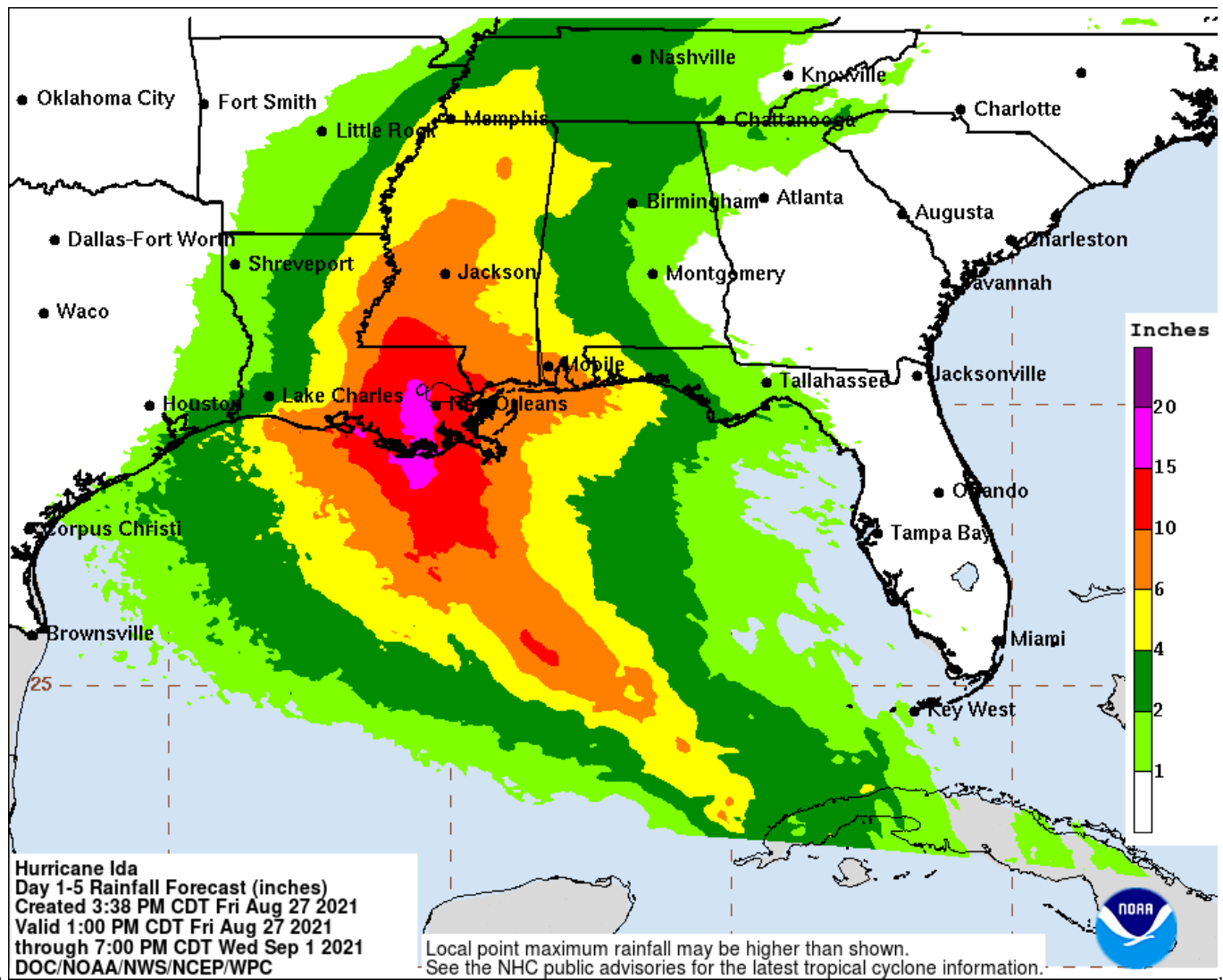
3. Ida is expected to be an extremely dangerous major hurricane when it reaches the coast of Louisiana. Hurricane-force winds are expected Sunday in portions of the Hurricane Warning area along the Louisiana coast, including metropolitan New Orleans, with potentially catastrophic wind damage possible where the core of Ida moves onshore. Actions to protect life and property should be rushed to completion in the warning area.

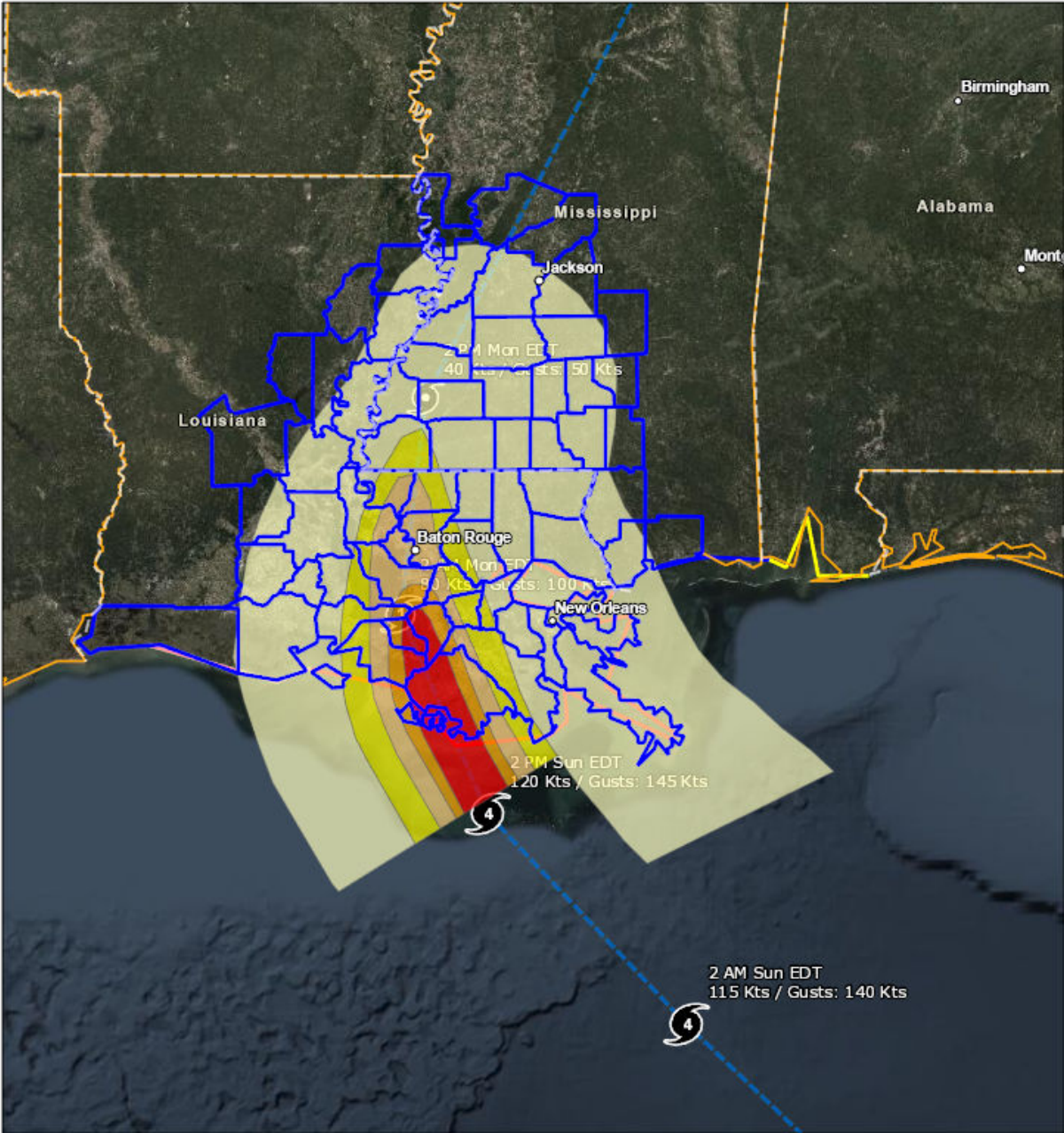
4. Ida is likely to produce heavy rainfall later Sunday into Monday across the central Gulf Coast from southeast Louisiana to coastal Mississippi and Alabama, resulting in considerable flash, urban, small stream, and riverine flooding impacts. As Ida moves inland, flooding impacts are possible across portions of the Lower Mississippi and Tennessee Valleys.



**For more information go to [hurricanes.gov](https://hurricanes.gov)**







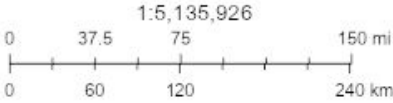
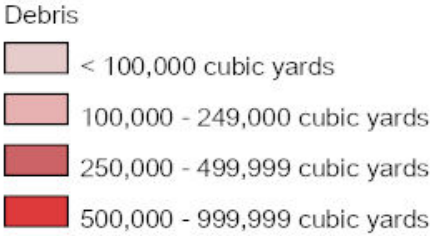
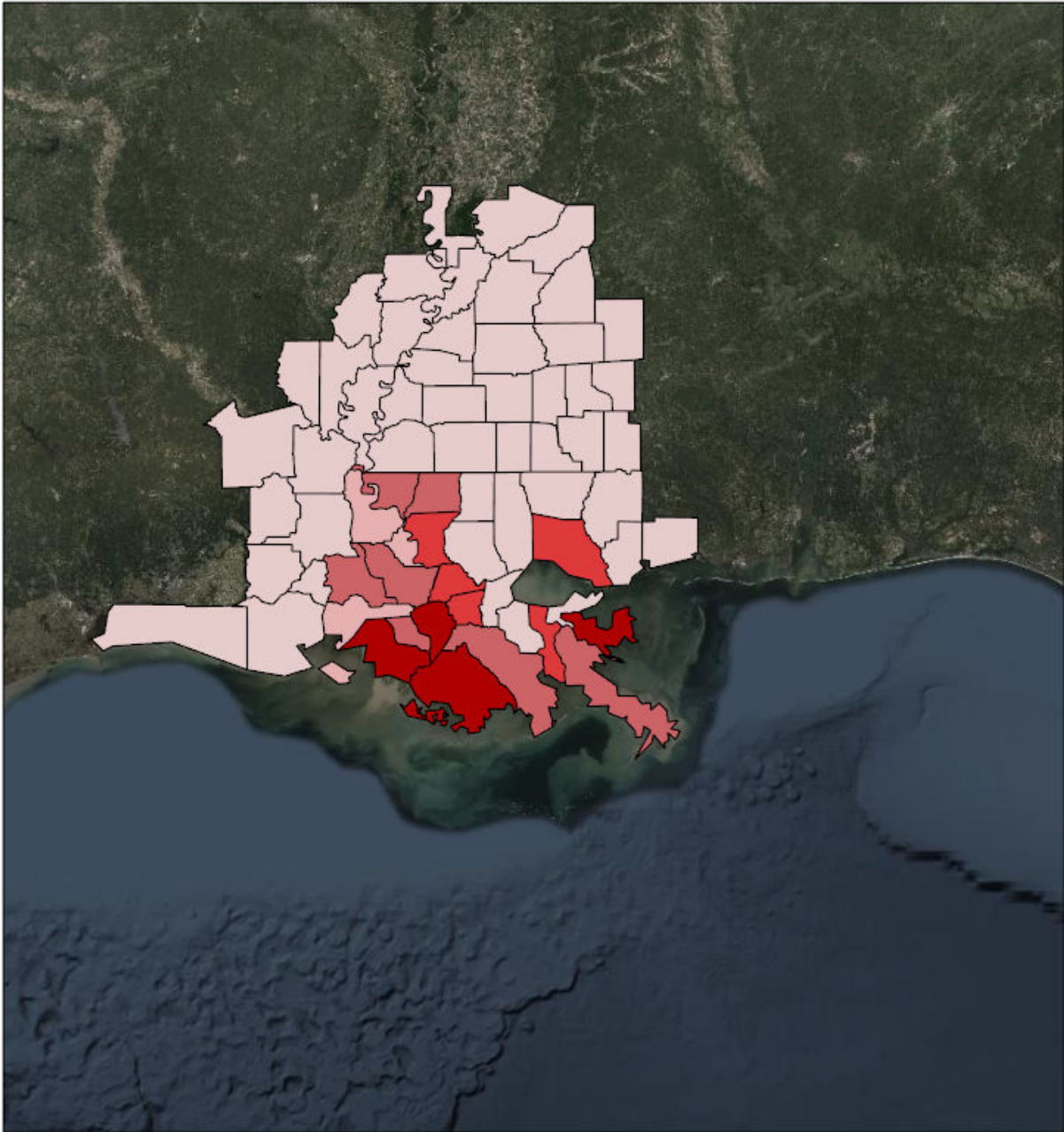
1:4,991,478

0 35 70 140 mi  
0 55 110 220 km

Source: NOAA, Esri, NOAA/NOS/OCS nowCOAST, NOAA/NWS/NHC, NOAA/NWS/CPHC, Esri, HERE, Garmin, FAO, NOAA, USGS, EPA, Source: Esri, DigitalGlobe, GeoEye, Earthstar Geographics, CNES/Airbus DS, USDA, USGS, AeroGRID, IGN, and the GIS User Community

Created by SimSuite

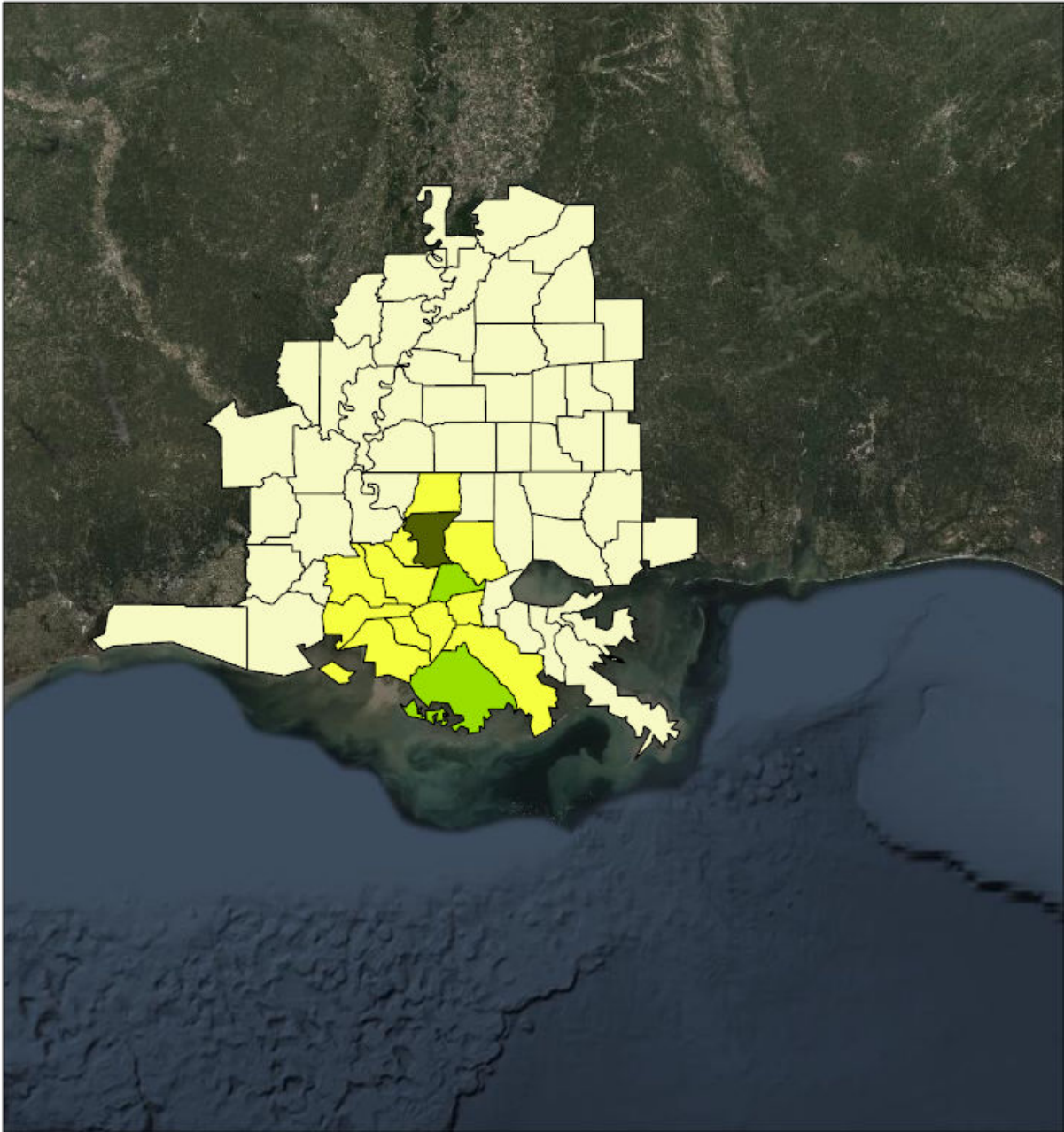
Debris



Source: Esri, DigitalGlobe, GeoEye, Earthstar Geographics, CNES/Airbus DS, USDA, USGS, AeroGRID, IGN, and the GIS User Community

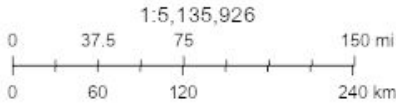
Created by SimSuite

Est. Temp. Roofing



Est. Temp. Roofing

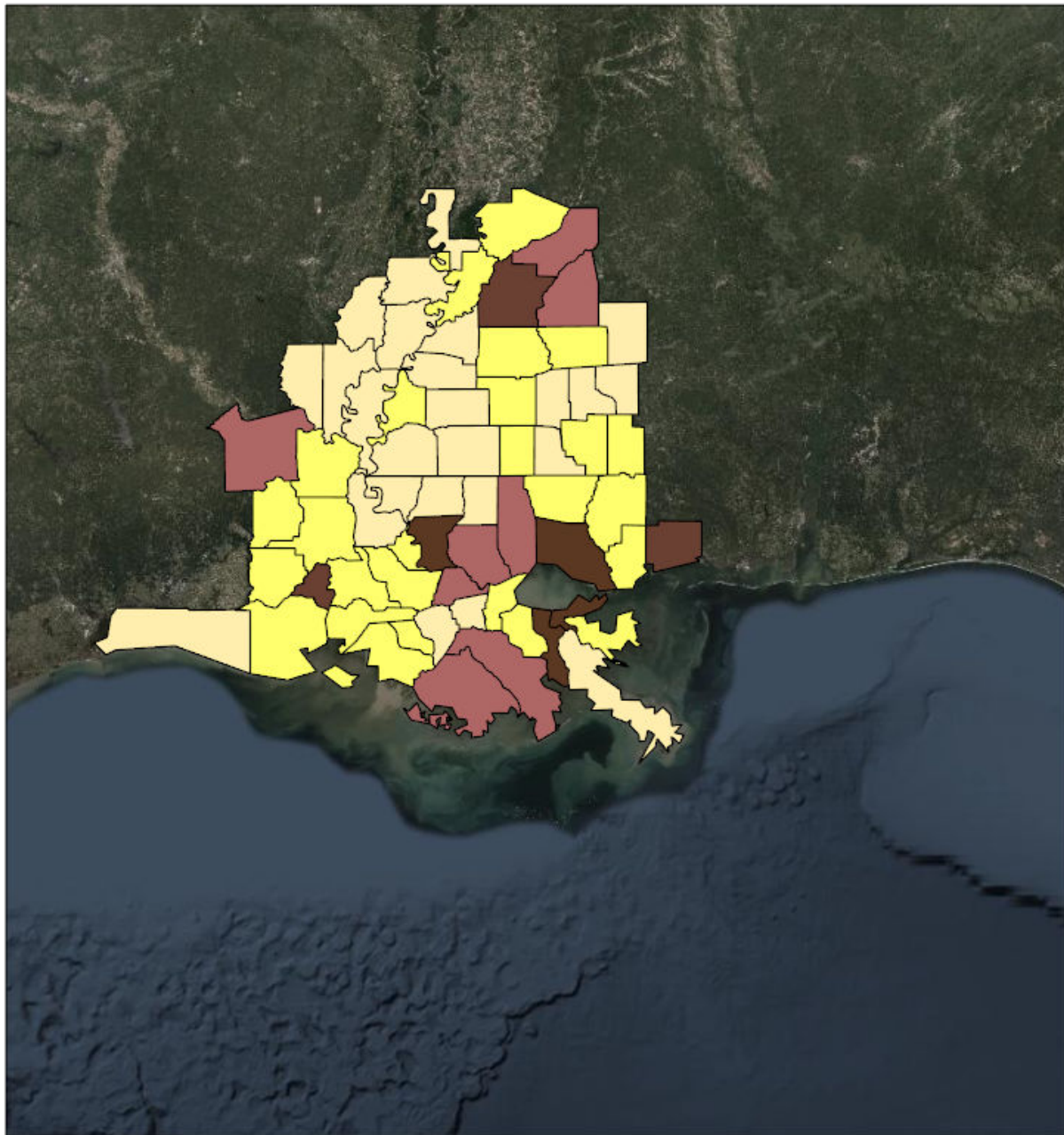
- < 100 units
- 100 - 499 units
- 500 - 999 units



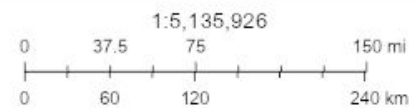
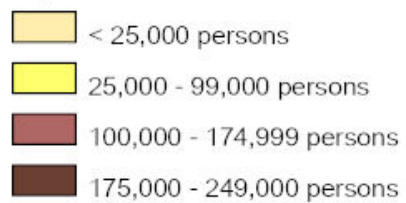
Source: Esri, DigitalGlobe, GeoEye, Earthstar Geographics, CNES/Airbus DS, USDA, USGS, AeroGRID, IGN, and the GIS User Community

Created by SimSuite

## Population



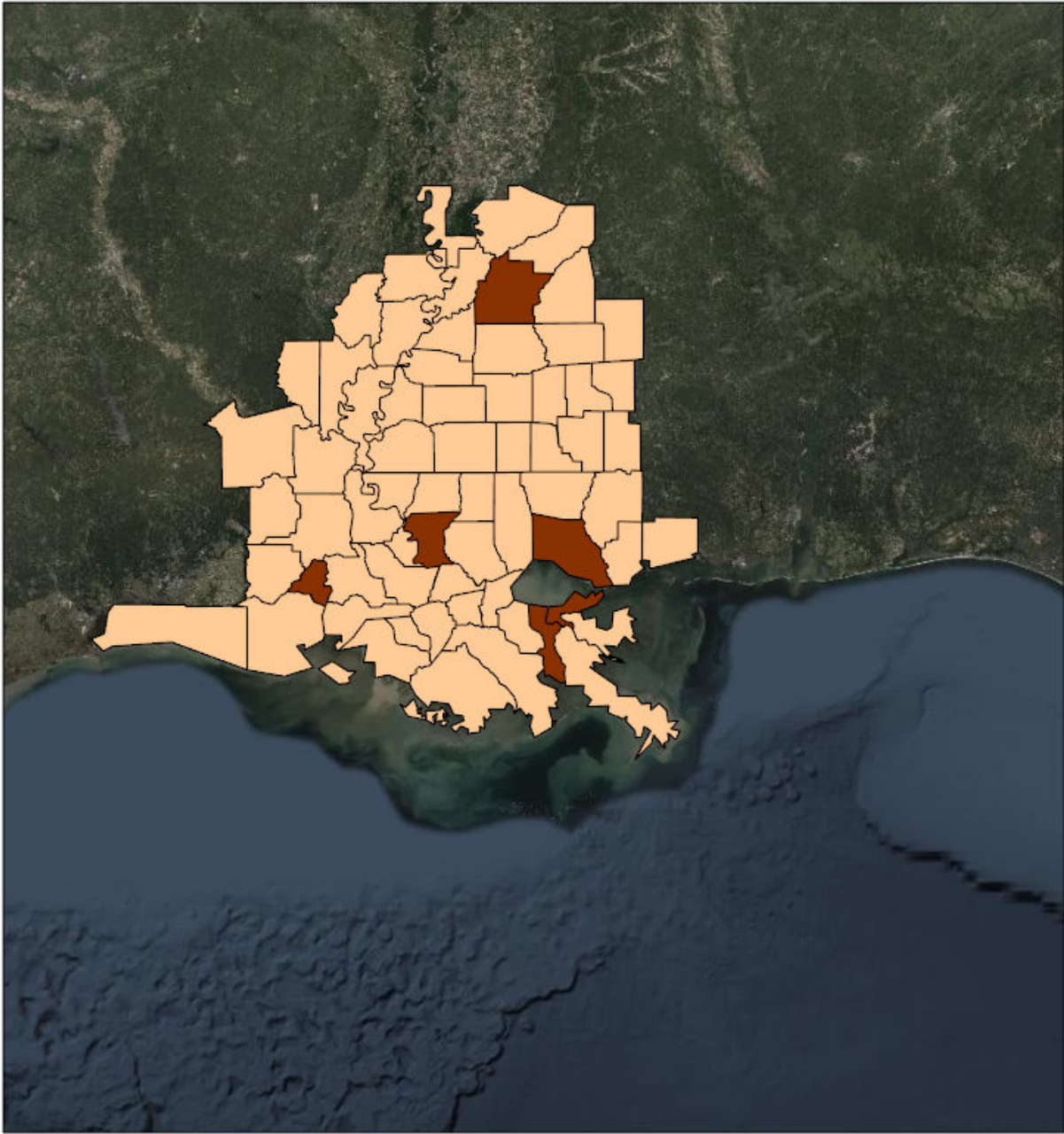
Population






Source: Esri, DigitalGlobe, GeoEye, Earthstar Geographics, CNES/Airbus DS, USDA, USGS, AeroGRID, IGN, and the GIS User Community

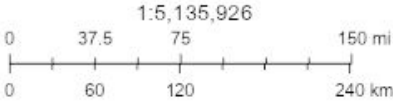
Created by SimSuite

Households



Households

-  < 7,500 Households
-  15,000 - 24,999 Households
-  25,000 - 49,999 Households



Source: Esri, DigitalGlobe, GeoEye, Earthstar Geographics, CNES/Airbus DS, USDA, USGS, AeroGRID, IGN, and the GIS User Community

Created by SimSuite

## Mission Summary



The mission models account for storm surge and wind damage only, but do not account for other related storm hazards that may affect the mission estimates.

Mission Summary	
Total Counties	65
Debris (cu. yd.)	15,117,193
Est. Temp. Roofing (units)	7,954
Act. Temp. Roofing (units)	2,625
Population	4,762,455
Households	1,712,729
Population Distribution	
Tropical Storm	2,994,360
Category 1	384,821
Category 2	535,549
Category 3	75,550
Category 4	85,004

<b>LOUISIANA</b>	<b>Yds of Debris (15,108,403)</b>	<b>Est. Roof Units (7,934)</b>	<b>Act. Roof Units (2,618)</b>	<b>Population (3,499,827)</b>	<b>Households (1,252,764)</b>
Acadia	0	0	0	64,233	22,841
Ascension	644,413	749	247	124,274	37,790
Assumption	1,107,288	164	54	24,326	8,736
Avoyelles	0	0	0	43,493	15,432
Cameron	0	0	0	7,408	2,575
Catahoula	0	0	0	10,384	3,834
Concordia	0	0	0	20,789	7,613
East Baton Rouge	872,329	4,054	1,338	455,183	172,057
East Feliciana	302,613	100	33	20,133	7,022
Evangeline	0	0	0	35,225	12,829
Franklin	0	0	0	21,409	7,904
Iberia	235,149	248	82	74,654	26,778
Iberville	308,106	298	99	34,675	11,072
Jefferson	645,083	0	0	436,044	169,647
La Salle	0	0	0	15,517	5,468
Lafayette	0	0	0	249,487	87,027
Lafourche	449,785	318	105	102,036	35,486
Livingston	90,998	211	70	142,761	46,007
Madison	0	0	0	11,737	4,025
Orleans	0	0	0	378,952	142,158
Plaquemines	286,653	0	0	24,106	8,077
Pointe Coupee	126,626	84	28	22,931	9,082
Rapides	0	0	0	138,904	50,401
St. Bernard	1,072,488	0	0	42,016	13,221
St. Charles	86	0	0	55,762	18,557
St. Helena	235	1	0	11,008	4,333
St. James	978,130	127	42	22,785	7,717
St. John the Baptist	23,527	55	18	46,127	15,965
St. Landry	48	0	0	85,834	31,857
St. Martin	340,988	118	39	55,795	19,216
St. Mary	2,592,925	435	144	54,463	20,457
St. Tammany	887,463	0	0	259,212	87,521
Tangipahoa	0	0	0	133,414	45,135
Tensas	0	0	0	5,076	2,172
Terrebonne	3,715,618	677	223	116,998	40,091
Vermilion	0	0	0	61,784	21,889
Washington	0	0	0	48,152	18,113
West Baton Rouge	176,193	237	78	26,881	8,688
West Feliciana	251,662	58	19	15,859	3,971

MISSISSIPPI	Yds of Debris (8,790)	Est. Roof Units (20)	Act. Roof Units (7)	Population (1,262,628)	Households (459,965)
Adams	0	0	0	31,160	12,643
Amite	982	2	1	12,545	5,351
Claiborne	0	0	0	9,331	3,440
Copiah	0	0	0	29,484	10,708
Covington	0	0	0	20,137	7,430
Franklin	0	0	0	8,081	3,211
Hancock	0	0	0	48,810	17,380
Harrison	0	0	0	205,027	71,476
Hinds	0	0	0	243,165	91,351
Issaquena	0	0	0	1,325	472
Jefferson	0	0	0	7,644	2,929
Jefferson Davis	0	0	0	11,776	4,977
Lamar	0	0	0	58,929	21,542
Lawrence	0	0	0	13,333	5,078
Lincoln	0	0	0	35,319	13,296
Madison	0	0	0	107,968	35,829
Marion	0	0	0	26,158	10,135
Pearl River	0	0	0	56,827	20,816
Pike	0	0	0	40,438	15,370
Rankin	0	0	0	150,867	52,836
Simpson	0	0	0	27,769	10,330
Smith	0	0	0	16,696	6,221
Walthall	0	0	0	14,801	5,888
Warren	0	0	0	48,277	18,941
Wilkinson	7,808	18	6	9,239	3,455
Yazoo	0	0	0	27,522	8,860

## Critical Infrastructure

Summary			
Total Critical Facilities		1,780	
Power Requirements (kW)		65,722.8	
Range (kW)			
Communications	# FED Gen Req	Range (kW)	Req kW
AM Antennas (17)	0.9	35 - 75	46.8
Cellular Towers (88)	52.8	35 - 75	2,904.0
FM Antennas (46)	2.3	35 - 75	126.5
Education	# FED Gen Req	Range (kW)	Req kW
Private Schools (89)	0.0	200 - 300	0.0
Public Schools (344)	103.2	200 - 300	25,800.0
Colleges and Universities (43)	0.9	200 - 300	215.0
Emergency Services	# FED Gen Req	Range (kW)	Req kW
911 Call Centers (0)	0.0	15 - 35	0.0
Emergency Medical Service (204)	20.4	15 - 35	510.0
Fire Stations (262)	26.2	15 - 35	655.0
Service Providers (0)	0.0	0 - 0	0.0
Healthcare	# FED Gen Req	Range (kW)	Req kW
Nursing Homes (84)	12.6	35 - 100	850.5
Hospitals (48)	14.4	800 - 2000	20,160.0
Urgent Care Facilities (19)	3.8	200 - 300	950.0
Military	# FED Gen Req	Range (kW)	Req kW
Air National Guard (ANG) Sites (0)	0.0	15 - 35	0.0
Army National Guard (ARNG) Sites (12)	0.0	15 - 35	0.0
National Security Government Military Facilities (78)	0.0	15 - 35	0.0
Law Enforcement	# FED Gen Req	Range (kW)	Req kW
Prison Points (25)	5.0	400 - 600	2,500.0
Local Police (39)	3.9	15 - 35	97.5
State Police (4)	0.2	15 - 35	5.0
Correctional Facilities (0)	0.0	400 - 600	0.0
State and Local EOC	# FED Gen Req	Range (kW)	Req kW
Local Emergency Operations Centers (17)	3.4	15 - 40	93.5
State Emergency Operation Centers (EOCs) (1)	0.2	15 - 35	5.0

State Facilities	# FED Gen Req	Range (kW)	Req kW
Governors Mansion (1)	0.0	100 - 200	0.0
Major State Government Building (24)	2.4	100 - 200	360.0

Transportation	# FED Gen Req	Range (kW)	Req kW
Ports (169)	0.0	600 - 1200	0.0
Amtrak Stations (2)	0.0	100 - 300	0.0
Bus Stations (30)	0.0	100 - 300	0.0
Intermodal Terminal Facilities (6)	0.0	100 - 300	0.0
Railroad Stations (1)	0.0	100 - 300	0.0
Public-Use Airports (110)	13.2	40 - 100	924.0

Water	# FED Gen Req	Range (kW)	Req kW
Water Treatment Facilities (0)	0.0	800 - 2000	0.0
Wastewater Treatment Plants (17)	6.8	800 - 2000	9,520.0

## COVID-19

#	County	Cases
1	Jefferson	64,996
2	East Baton Rouge	58,123
3	Orleans	43,140
4	St. Tammany	39,541
5	Lafayette	34,745
6	Harrison	28,472
7	Hinds	28,293
8	Livingston	22,202
9	Tangipahoa	20,888
10	Ascension	19,856
11	Rankin	19,269
12	Rapides	18,482
13	Terrebonne	17,654
14	Lafourche	16,330
15	Madison	12,887
16	St. Landry	12,379
17	Iberia	11,136
18	Acadia	9,312
19	Lamar	9,241
20	Vermilion	8,823
21	St. Charles	8,245
22	St. Mary	7,754
23	St. Martin	7,594
24	Pearl River	7,332
25	Washington	7,011
26	St. Bernard	6,316
27	Hancock	6,223
28	Avoyelles	6,219
29	Warren	5,848
30	St. John the Baptist	5,780
31	Iberville	5,435
32	Evangeline	5,008
33	Pike	4,695
34	Lincoln	4,689
35	East Feliciana	4,239
36	West Baton Rouge	4,125
37	Adams	3,922
38	Yazoo	3,871
39	Simpson	3,789

40	Copiah	3,789
41	Covington	3,723
42	Franklin	3,689
43	Marion	3,599
44	Plaquemines	3,545
45	Pointe Coupee	3,517
46	Assumption	3,330
47	St. James	3,027
48	Concordia	2,789
49	LaSalle	2,305
50	Smith	2,224
51	Madison	1,889
52	Lawrence	1,827
53	Walthall	1,809
54	Amite	1,684
55	Catahoula	1,559
56	Jefferson Davis	1,498
57	West Feliciana	1,403
58	St. Helena	1,223
59	Claiborne	1,189
60	Franklin	1,016
61	Wilkinson	908
62	Jefferson	815
63	Cameron	780
64	Tensas	432
65	Issaquena	184